

## Subject

Door control TS 971 with wall-mount charger and load management

## Description

A sufficient number of charging points (②) are required for the ever increasing number of electric vehicles (①). The costs involved remain high, and especially the installation costs are considerable<sup>1)</sup>.

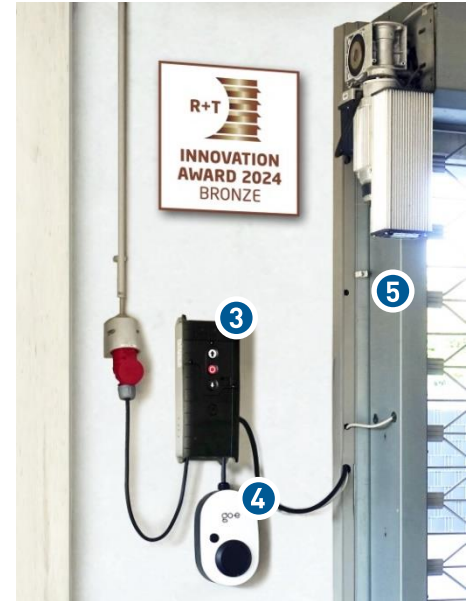


1) The costs for using a wall-mount charger inside a building currently range from approx. €600 to €1,500. The installation costs are significant, ranging from €1,045 to €5,200.

Source: ADAC survey dated 03/2023

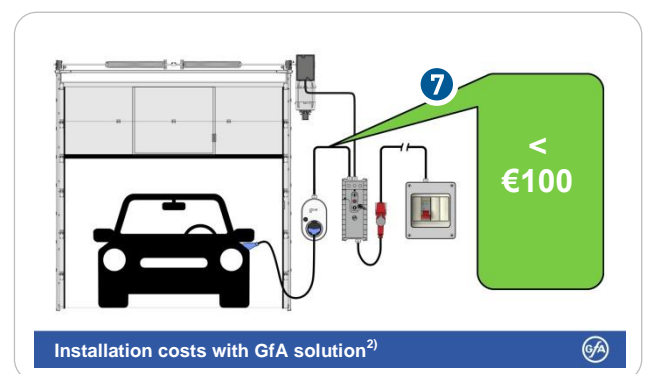
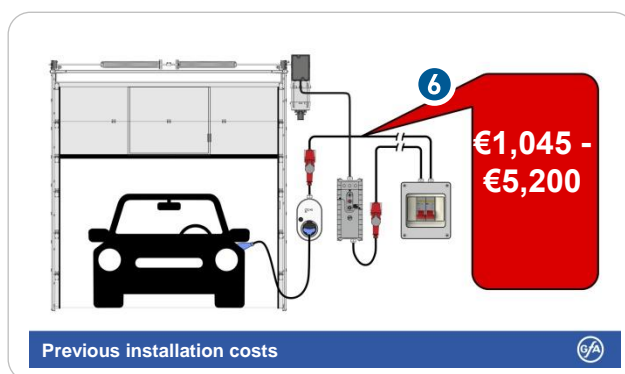
The door control TS 971 (③) with wall-mount charger (④) and load management presents an innovative solution for charging electric vehicles. The high installation costs for a wall-mount charger are significantly reduced with this solution. The prerequisite for installation is that the planned charging point is located near an electrically operated door (⑤).

## Figure

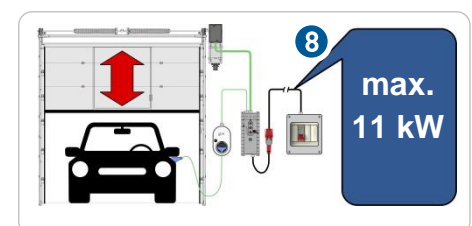


## Description

Costs are saved due to the door control (⑦) supplying the wall-mount charger with power rather than it requiring a separate power supply line (⑥), which was previously necessary.



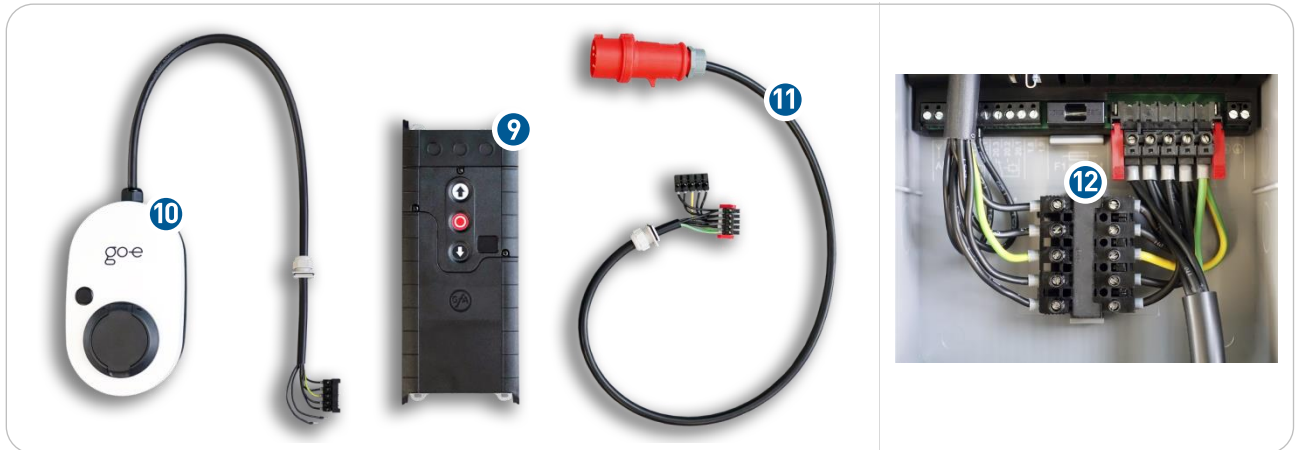
A built-in load management system ensures that the maximum power consumption of 11 kW is not exceeded, even if there is door movement (⑧). The system therefore is not subject to official authorisation!<sup>3)</sup>



2) GfA connection kit incl. installation

3) The system could be subject to official authorisation, depending on the country and grid operator.

A complete system consists of a door control TS 971 (9) with new software, a go-e wall-mount charger (10) and a suitable set of cables (11) for Plug-and-Play installation (12).

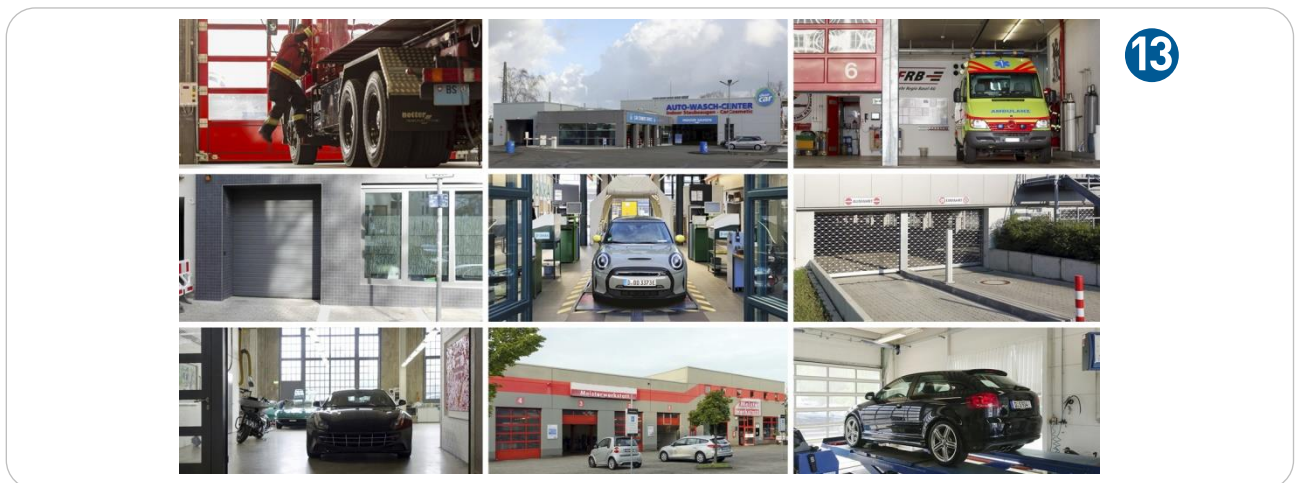


## Product

Designation	Description	Part no.
<b>Door control TS 971 / Wall-mount-charger / Connection kit</b>		
TS 971 (350 A DC)	TS 971 (external 24 V 350 mA DC)	20097100.99001 <sup>4)</sup>
go-e wall-mount charger	With pluggable mains supply cable; length: 1.8 m	20004379.00180
Connection kit CEE 3N~400 V (5-pin) for wall-mount charger	With pluggable mains supply cable; length: 0.7 m	30005132.30002

## Application

Numerous places of installation and applications are conceivable (13).



## Notes

The wall-mount charger with connection kit can be delivered starting May 2024. This when the variants of door control TS 971 with the adapted software will also become available. Do you have further questions about our products and prices? Your sales representative will gladly advise you:

<http://gfa-elektromaten.com/en-DE/contact.html>

4) The article number changes as of 07/2024 to: 20097100.00001