

VR/K2E
40019022 00001



Illuminated RF keypad

Range: Digicode

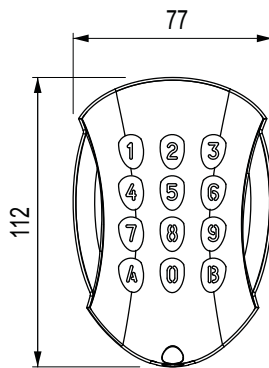
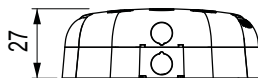
GALEOR

Illuminated RF Keypad

Thank you for buying our products and for the confidence you placed in our company.

1] GENERAL INFORMATION

- **Wireless RF keypad.**
- **Polished heavy duty Zamak® cast alloy.**
- **Backlit keys.**
- **Frequency : 433,92 Mhz.**
- **2 channels (buttons «A» and «B»).**
- **Compatible with Erone® receivers.**
- **Compact.**
- **Surface mount.**
- **Mounting with Torx® screws**
- **Partially sealed with epoxy.**
- **22 User codes - 4 or 5 digits.**
- **1 Master code - 5 digits.**
- Audible and visual feedback.
- Modulation: AM/ASK.
- Encoding: Keeloq® hopping code
- Dimensions (L x W x D):
GALEOR = 110 x 75 x 15mm,
- Supply: Lithium battery 3,6V - LS14500.
- Current consumption:
 - 28 mA in transmission,
 - 0,8uA in sleep-mode.



Environmental tests: Vibrations

WEEE

Environmental test: Salt spray

IP64

Certification CE

-25°C a +70°C

FCC ID : PWN100200029

*"The device complies with part 15 of the FCC Rules. Operation is subjected to the following 2 conditions:
(1) this device may not cause harmful interference and
(2) this device must accept any interference received, including interference that may cause undesired operation"*

2] NOTES & RECOMMENDATIONS

Mounting recommendations

Mount the keypad on a fat surface to a any vandalism and to insure the best mounting.

Security advice

For securit the factory default master code reasons, change When selecting a master code and user code avoid sequential codes (example : **3 4 5 6 7**).

3] MOUNTING KIT

	(M4x10) Torx® screw)	T20 Torx® Spanner	Cache vis plastique	(M4x30) mounting screws	Plastic anchors	Battery	Foam
GALEOR	1	1	1	2	2	1	1

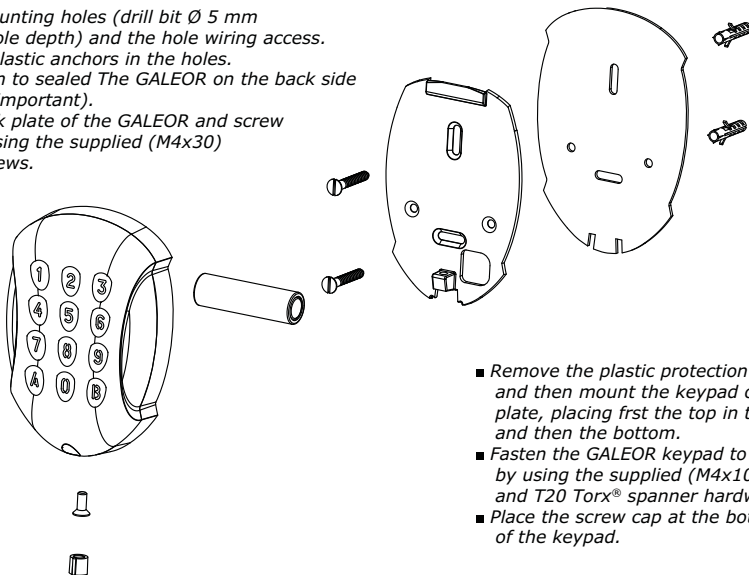
* Supplied.

GALEOR

Illuminated RF Keypad

4] MOUNTING

- Drill the 2 mounting holes (drill bit Ø 5 mm and 35 MM hole depth) and the hole wiring access.
- Insert the 2 plastic anchors in the holes.
- Stick the foam to sealed The GALEOR on the back side of the base (Important).
- Place the back plate of the GALEOR and screw on the wall using the supplied (M4x30) mounting screws.



- Remove the plastic protection of the battery and then mount the keypad on the back plate, placing first the top in the hooks and then the bottom.
- Fasten the GALEOR keypad to the back plate by using the supplied (M4x10) Torx® screw and T20 Torx® spanner hardware.
- Place the screw cap at the bottom of the keypad.

5] USER CODES TABLE

User	Channel		Code	Name
	A	B		
01				
02				
03				
04				
05				
06				
07				
08				
09				
10				
11				

User	Channel		Code	Name
	A	B		
12				
13				
14				
15				
16				
17				
18				
19				
20				
21				
22				

6] PROGRAMMING

GALEOR FACTORY SETTINGS :

- No user codes.
- Buzzer ON
- Time-out backlight : 3 Sec.
- Transmission time-out : 25 seconds
- Factory master code : **1 2 3 4 5**.
- Programming time-out : 10 seconds.
- Channel choices :
 - Channel 1 = A,
 - Channel 2 = B.

AUDIBLE FEEDBACKS :

- 1 beep : Power-up (battery insertion)
- 1 long beep :
 - Enter on menu,
 - Validation of a programming choice,
 - Exit from a menu choice.
- 2 beeps : Confm enter in factory recovery
- 3 beeps : confm factory recovery "A+1"
- 4 beeps :
 - Confm factory recovery "B+3",
 - Error for wrong channel,
 - Error for insertion of a code already Memorized.

USING RULES AND USER CODES:

- All the buttons can be used to compose the personal access code, except A and B.
- The master code must be composed by 5 digits.
- The user codes can be composed by 4 or 5 digits according to initial setting
- The master code cannot be used as transmission code.

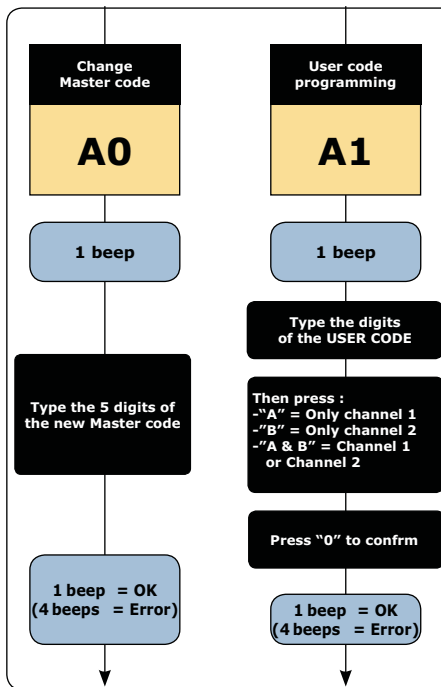
7] GETTING STARTED

The keypad comes without any setting for the user digit number. At the battery insertion the 12 leds start to blink, waiting for this setting.

- PRESS the **key 4** for **4 sec.** to set 4-digits user codes --> **4 beeps**
- PRESS the **key 5** for **5 sec.** to set 5-digits user codes --> **5 beeps**

After this setting, the keypad will accept only user codes composed by 4 or 5 digits, according to the choice made. If no change is done (change of the master code, user code memorization, etc) just by removing the battery the keypad comes back the factory settings and requires again to set the number of digits.

Once set the number of digits and made any change, the data-base remains definite and cannot be changed unless a factory default procedure is carried out (see procedure "B+3").



Error message if the Master code typed corresponds to User code in memory

Error message if the User code typed corresponds to a user code in memory
 ----- or -----
 the memory is full
 ----- or -----
 is 12345

GALEOR

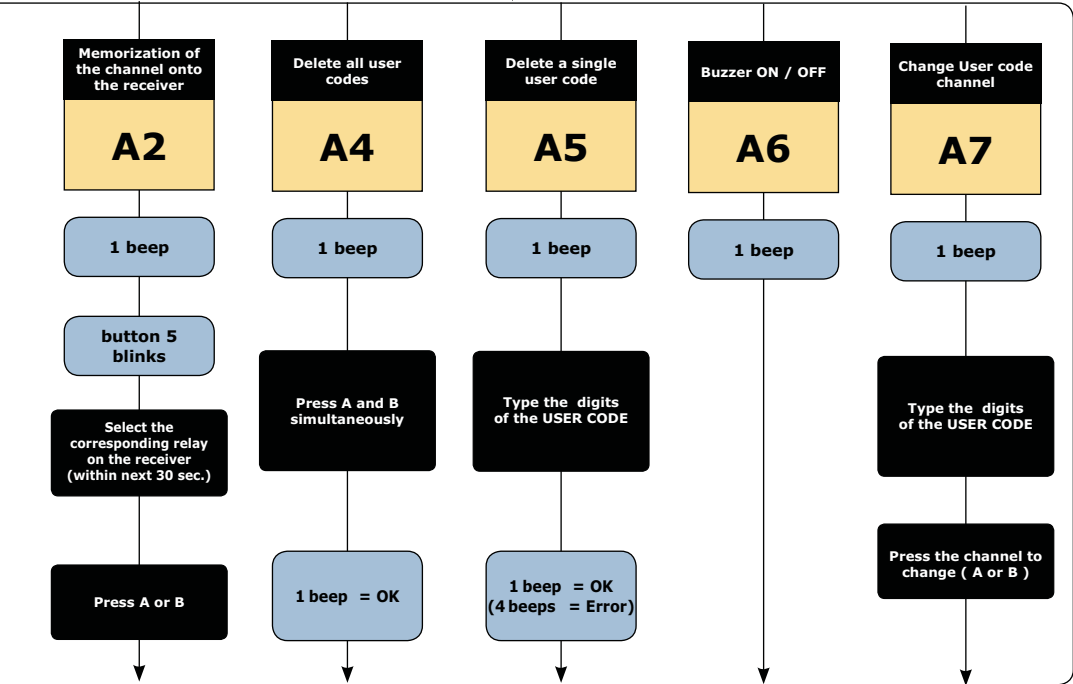
Illuminated RF Keypad



Type 2 times the MASTER CODE

REMINDER:
if the keypad blinks during 1 sec. at the first touch, check the battery.

Buttons backlit switch off except button 5



Error message if the code typed is not in memory

If the buzzer is enabled it will be disabled and viceversa.

If the channel was memorized it will be deleted, if not it will be memorized.
CH DELETED : 2 Beeps
CH MEMORIZED : 1 Beep

B

Programming exit*

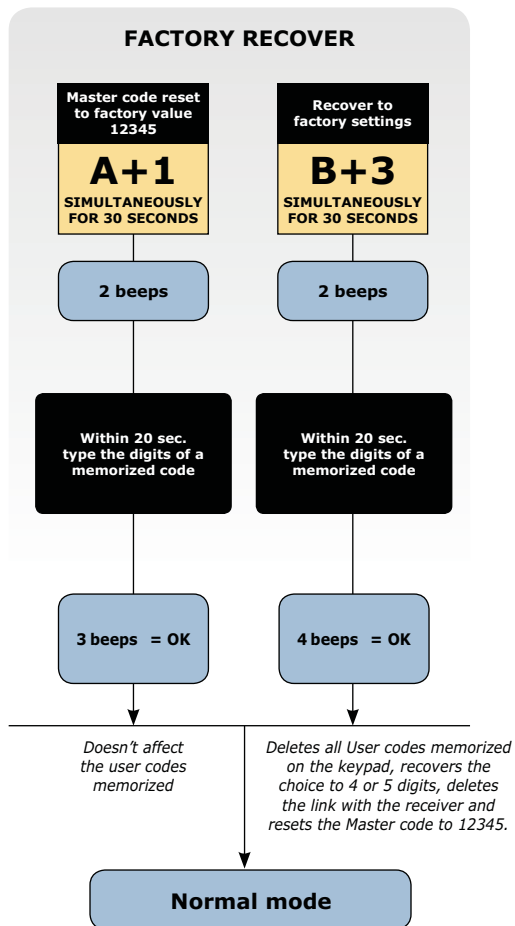
* The programming mode is limited to 10 sec. without any action on the keypad (no buttons pressed)

GALEOR

Illuminated RF Keypad

8] FACTORY RECOVERY

To avoid any damage action (intentional or not) the factory recovery can be carried out only by the owner of the 5-digit Master code or knowing any User code memorized (with 4 or 5 digits) . According to that and the final purpose of the recovery, follow the procedure "A+1" or "B+3".



NOTE : At the end of procedure "B+3", even the user code typed within the procedure will be deleted and the keypad must be memorized again onto the corresponding receiver.

GALEOR

Illuminated RF Keypad

6] GUARANTEE

Warranty period : 12 months from the production date placed inside. In this period if the appliance has any malfunction due to defective component, it will be repaired or replaced by the manufacturer. The warranty doesn't cover the plastic box. The assistance will be performed at the manufacturer site.

Supplied by:**GfA ELEKTROMATEN UK Ltd**

Agincourt Road

Warwick CV34 6XZ

United Kingdom

Telephone: 01926 452452

Fax: 01926 336417

E-mail: sales@gfa-elektromaten.co.ukWeb Site: www.gfa-elektromaten.co.uk