

# ILZR

## Protective cover



The manufacturer's instruction booklet supplied with the ILZR sensor contains important directions and warnings for the safe use of this equipment and should be read before installation or commissioning is undertaken.

### IMPORTANT!

This Protective cover doesn't increase the IP rating of the ILZR unit. This only protects against physical damage to the sensors.

**Step 1:**

Disconnect the rotating mounting base from your LZR scanner. Then install the screws through the mounting holes on the base and fasten with the spacer nuts included.

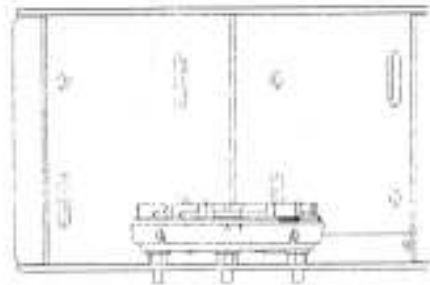
Requires:

- 4x screws M4x16mm
- 4x Spacer nuts M4

**Step 2:**

Install the mounting base with the screws through the designated holes in the protection cap.

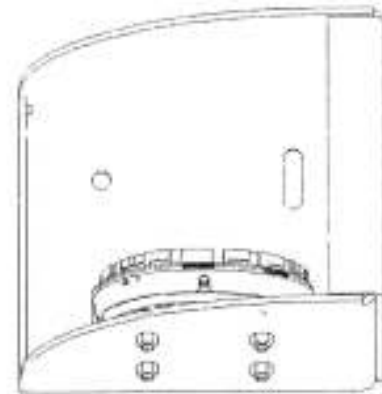
**Attention: Feed the cable through the laser base before the next step. Use one of the holes in the back of the protection cap to feed the cable out of.**

**Step 3:**

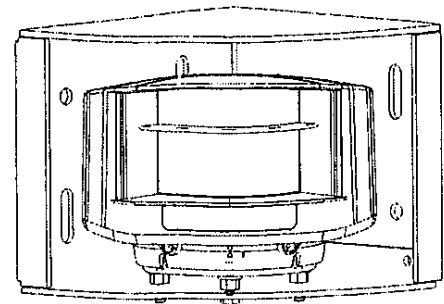
Screw the self-locking nuts onto the screws thereby properly connecting the sensor base to the protection cap.

Requires:

- 4x self-locking nut M4

**Step 4:**

Connect the sensor cable and install the sensor onto the rotating mounting base.



---

**Supplied by:**  
**GfA ELEKTROMATEN UK Ltd**  
Agincourt road, Warwick CV34 6XZ, England.  
Telephone: 01926 452452 Fax: 01926 336417  
E-mail: [sales@gfa-elektromaten.co.uk](mailto:sales@gfa-elektromaten.co.uk)  
Web Site: [www.gfa-elektromaten.co.uk](http://www.gfa-elektromaten.co.uk)

